



GUIDANCE ON HOW TO CORRECTLY DONN A GVS N3100 N99 MASK





ALWAYS
SANITIZE
YOUR HANDS
BEFORE
TOUCHING
A MASK

**REMOVE
THE MASK
FROM ITS
PACKAGING**



ALWAYS CHECK THE MASK FOR DEFECTS



BEFORE DONNING THE MASK, PLEASE ENSURE THAT YOU ARE
CLEAN SHAVEN, AS EVEN VERY SHORT FACIAL HAIR
WILL INTERFERE WITH THE FIT OF THE MASK





OPEN UP THE
MASK READY
TO WEAR

www.gvs.com

DONN THE MASK
STARTING AT
YOUR **CHIN**,
AND THEN
STRETCH THE
STRAPS BEHIND
YOUR **HEAD**

www.gvs.com



IT'S EXTREMELY IMPORTANT TO CORRECTLY ADJUST
THE ELASTIC STRAPS, IN ORDER TO OBTAIN A FIT



THERE ARE TWO WAYS OF ADJUSTING THE STRAPS

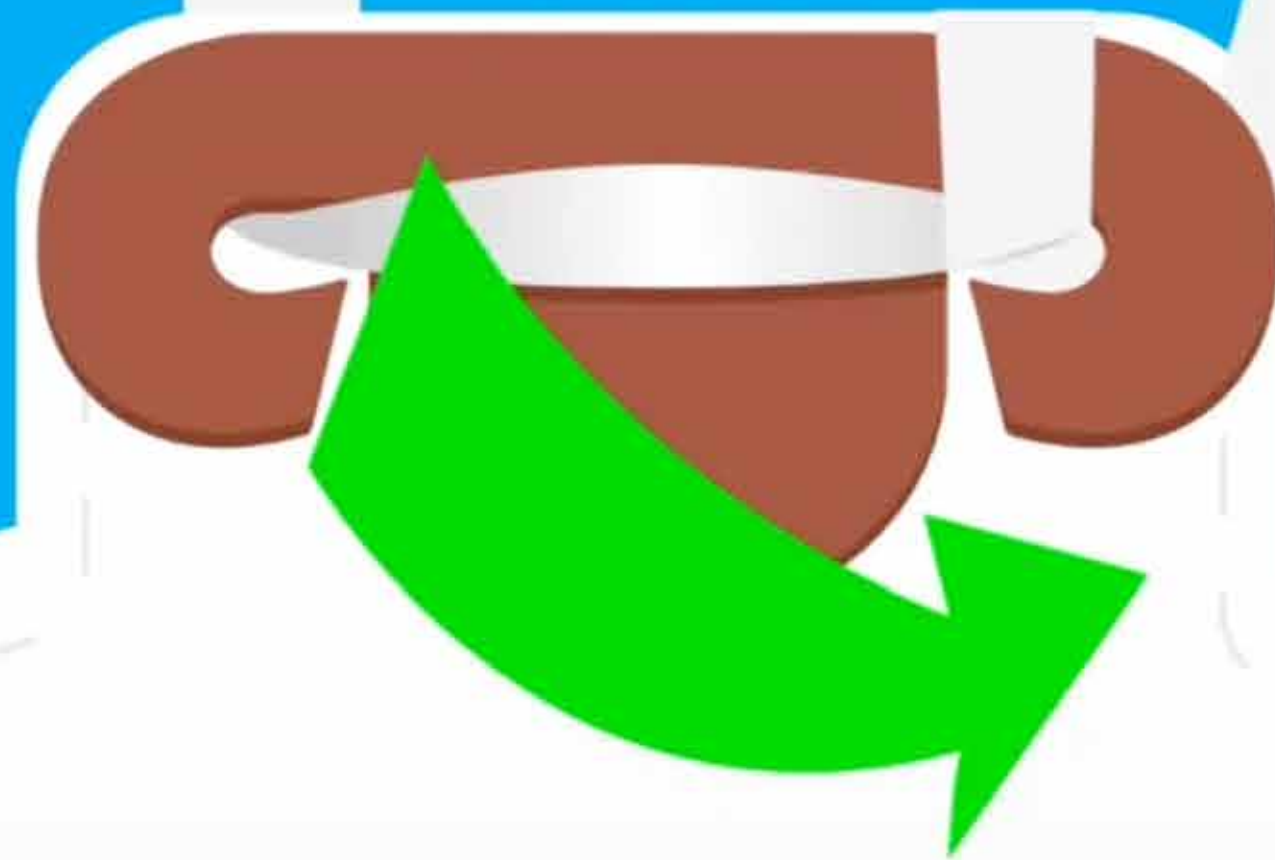


www.gvs.com

IF YOU NEED A LARGE ADJUSTMENT, WE SUGGEST
CREATING A KNOT IN THE STRAPS



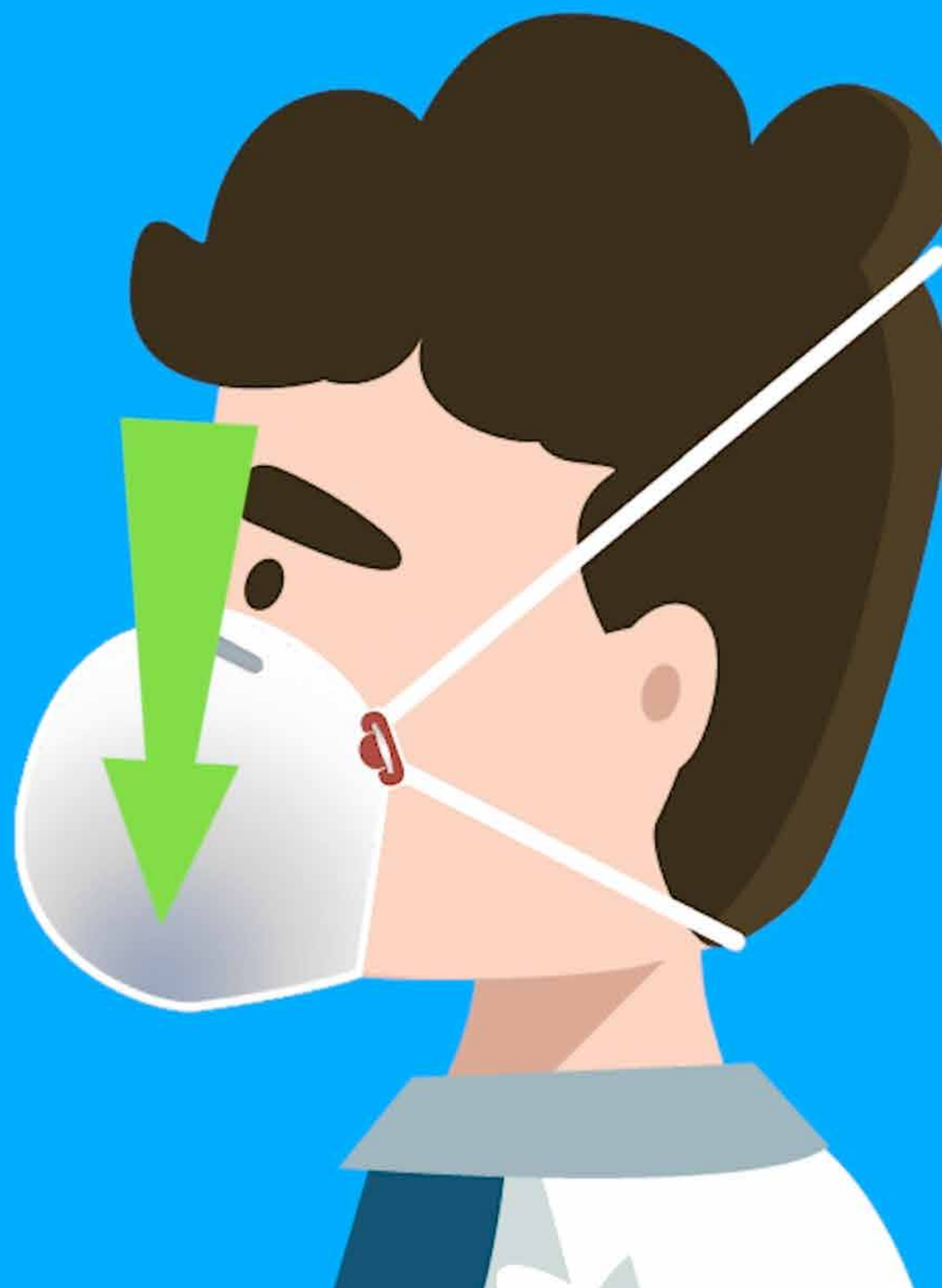
IF YOU NEED A SMALL ADJUSTMENT, WE SUGGEST
TWISTING THE STRAPS AROUND
THE SECURING CLIPS A FEW TIMES



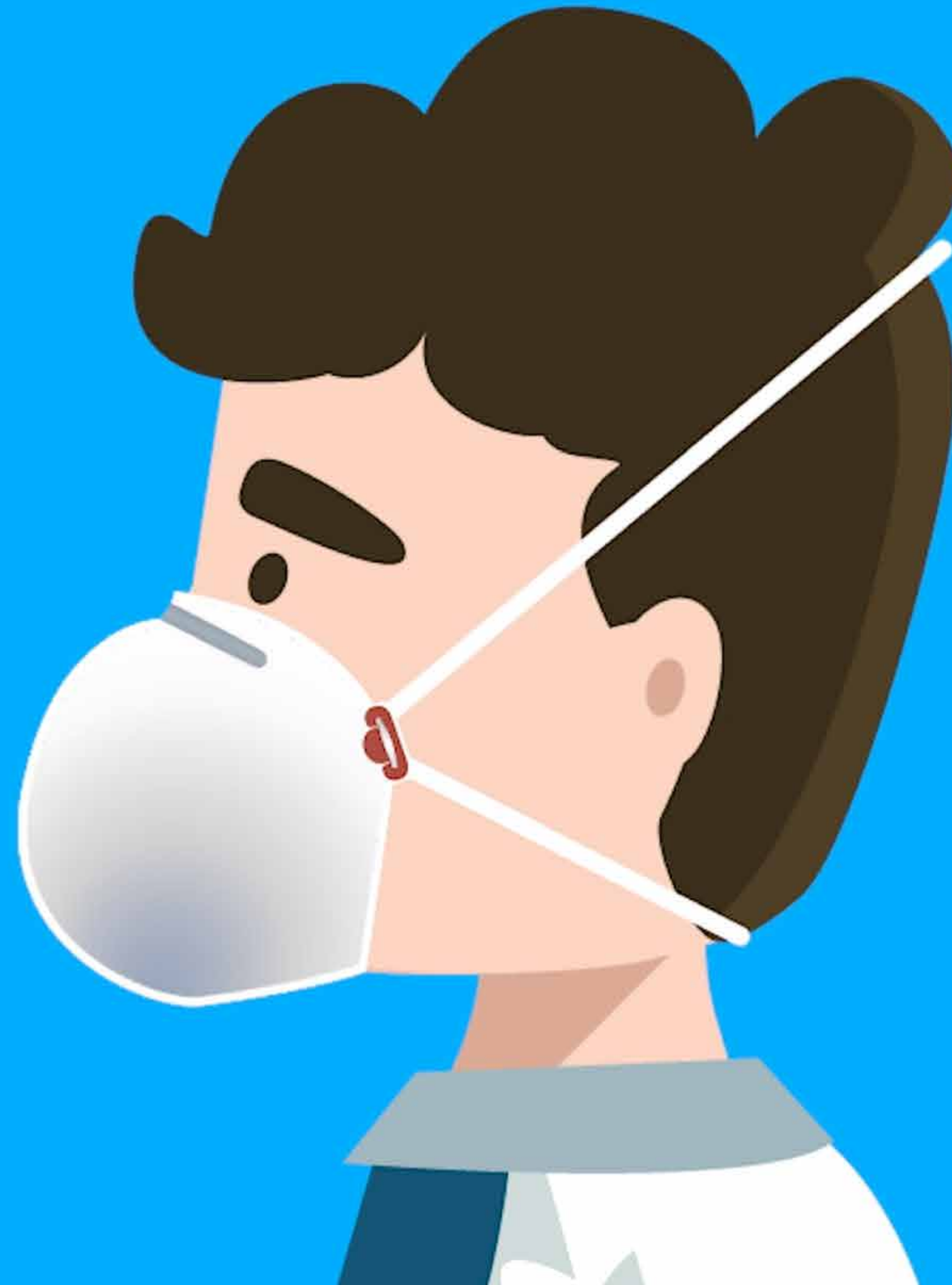
IT'S IMPORTANT
THAT **ONE** OF
THE **STRAPS** IS
ON THE **NAPE**
OF THE **NECK**,
AND THE **OTHER**
ON YOUR **CROWN**



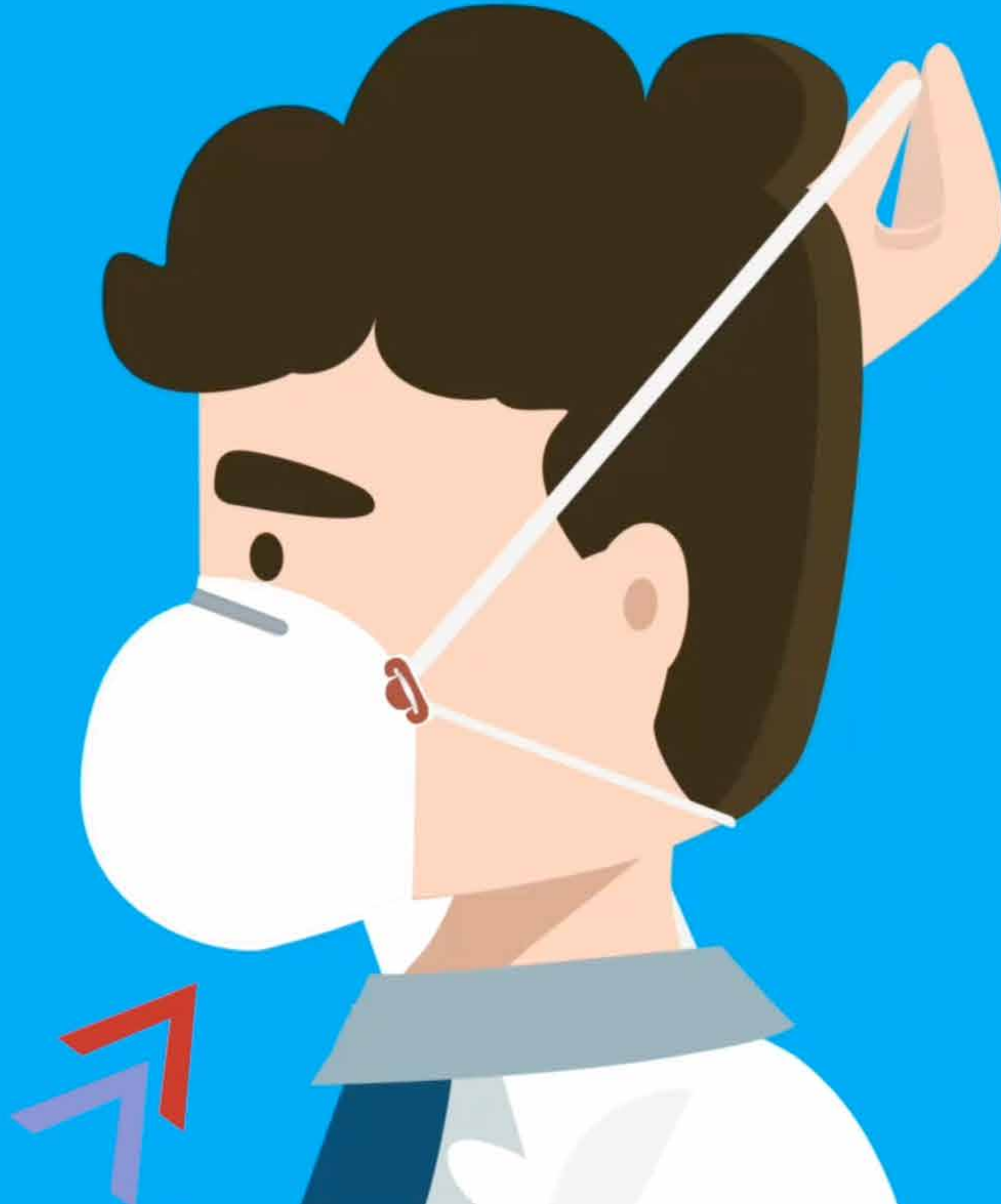
THE TOP STRAP
MUST **TRACE**
A STRAIGHT LINE
BETWEEN THE
TOP OF YOUR
CROWN AND
YOUR CHIN



BECAUSE THE
UPPER ELASTIC IS
RESPONSIBLE
FOR THE SEALING
OF THE CHIN



WHEN YOU TIGHTEN IT YOU MUST FEEL PRESSURE ON YOUR CHIN

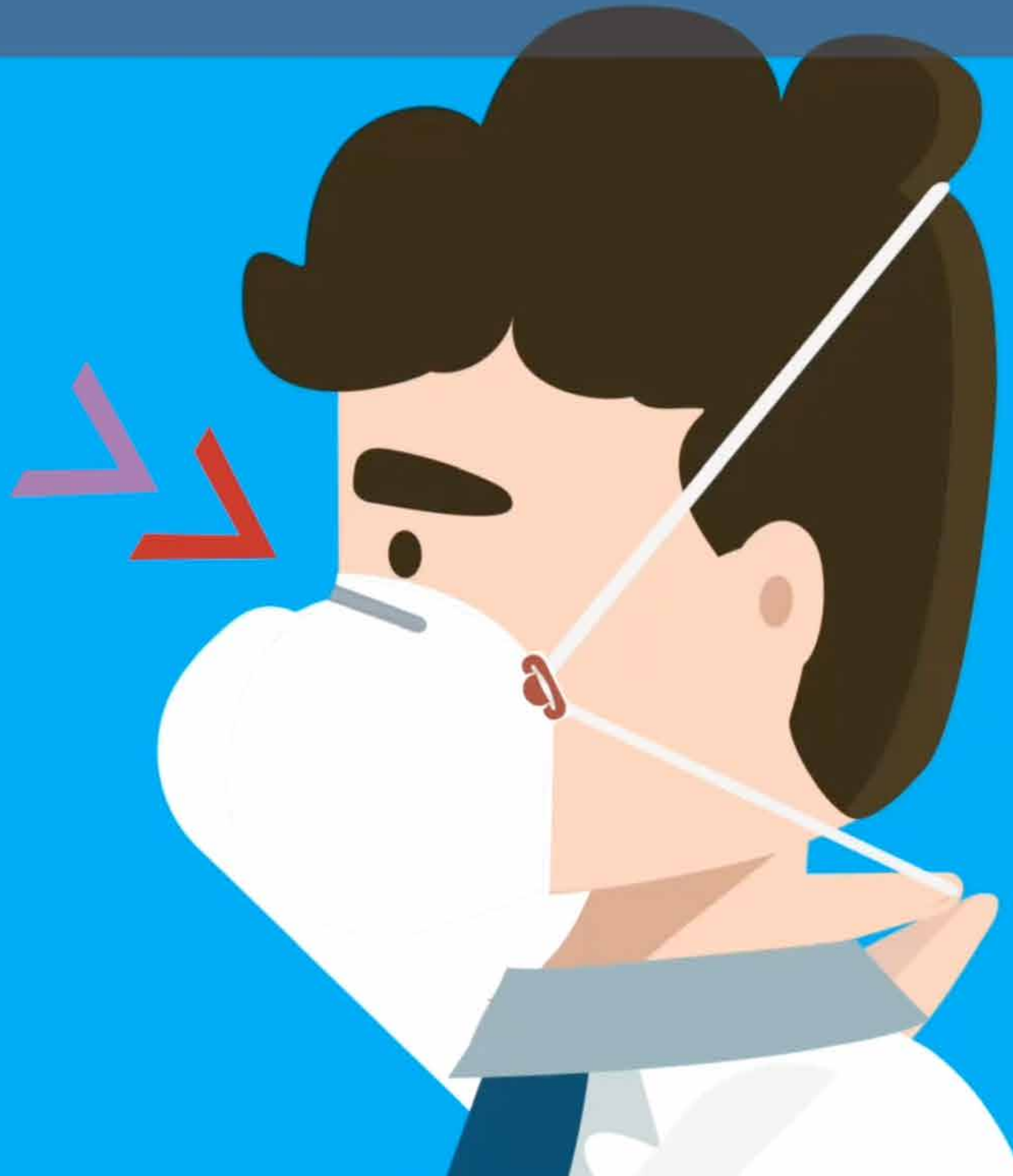


www.gvs.com

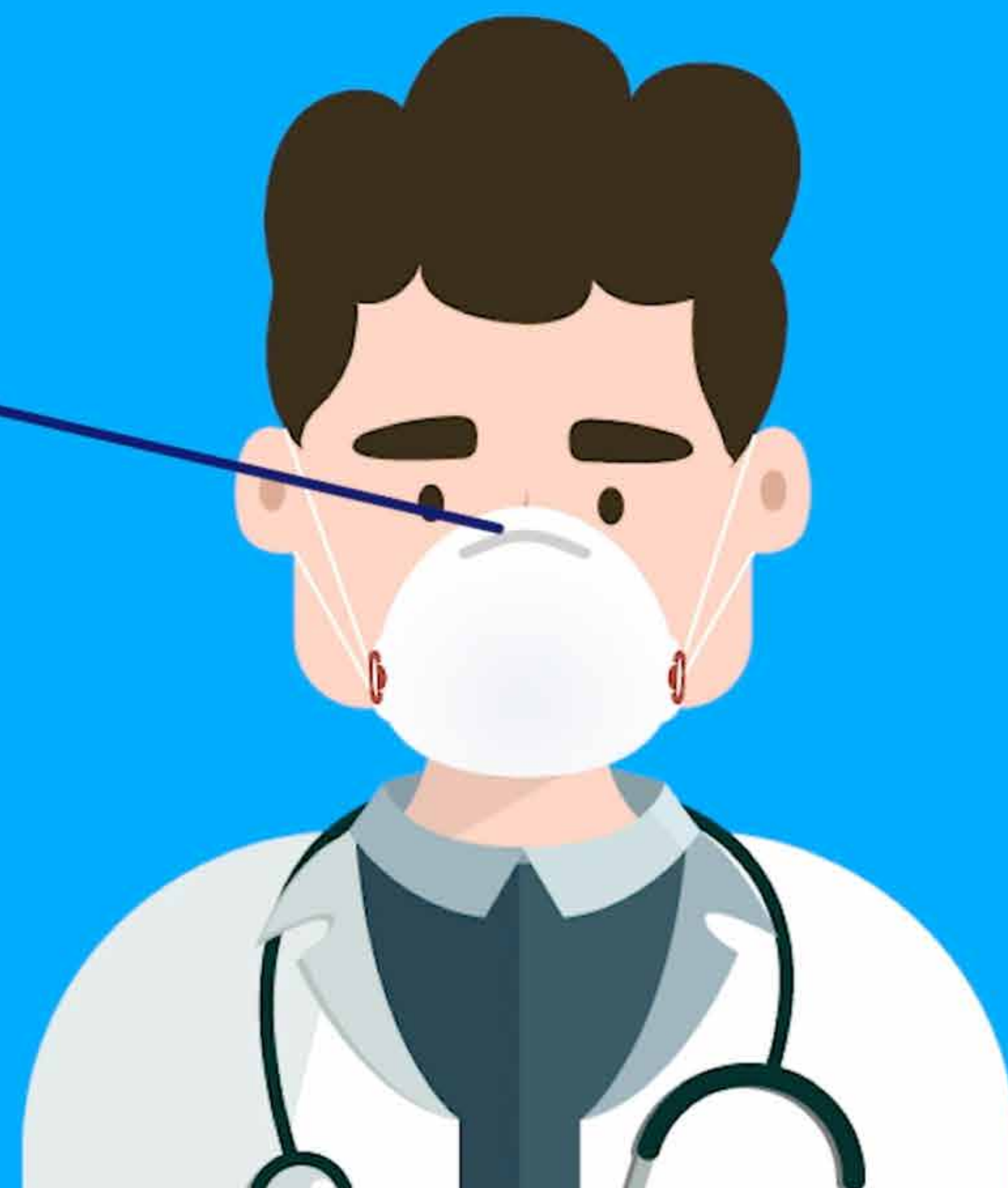
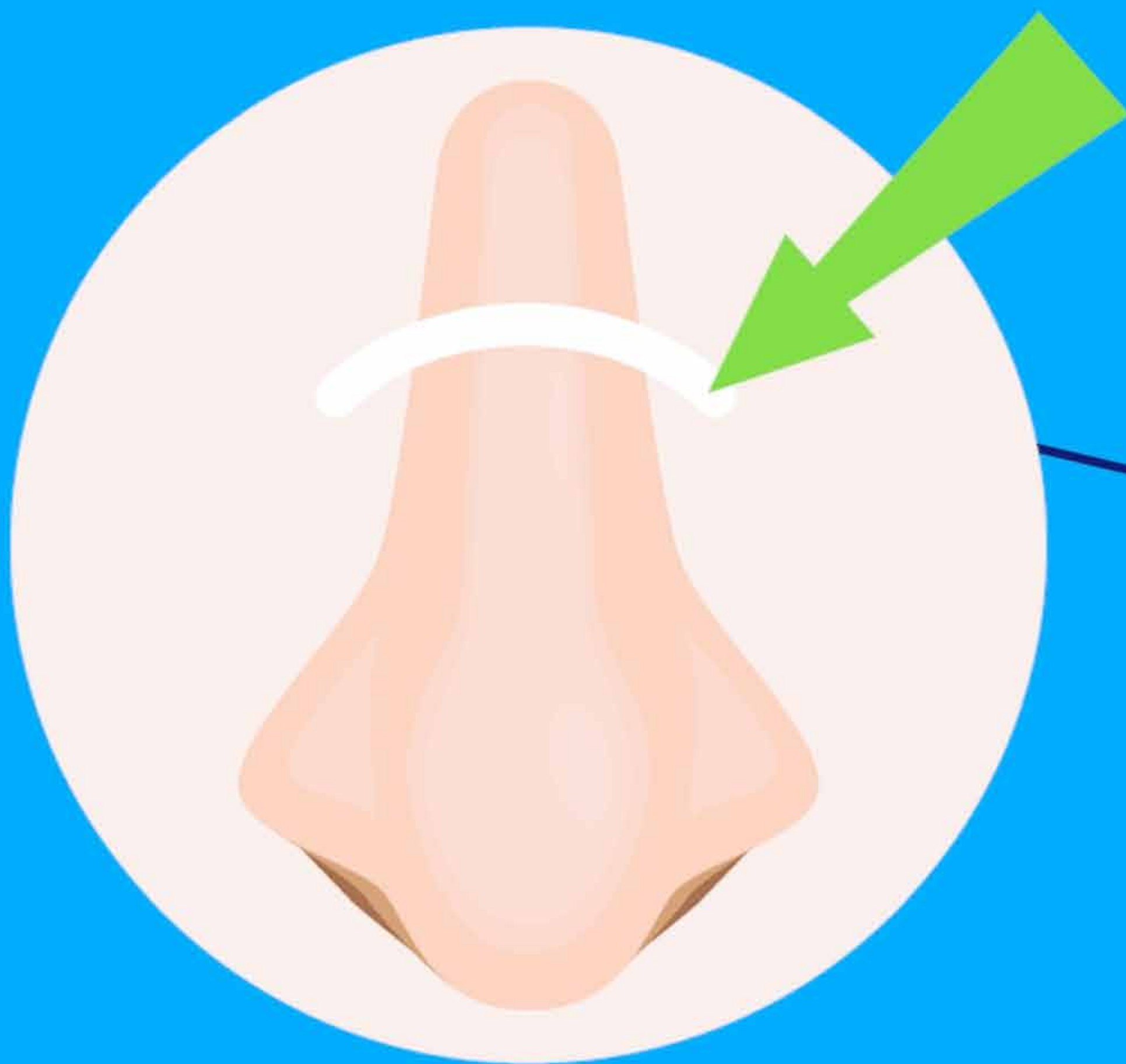
WHILE THE
LOWER ELASTIC
IS RESPONSIBLE
FOR THE UPPER
PART SEALING
THE NOSE



WHEN YOU TIGHTEN IT YOU MUST FEEL PRESSURE ON THE
BRIDGE OF YOUR NOSE



PRESS THE METAL CLIP SMOOTHLY ACROSS THE BRIDGE OF THE NOSE TO ACHIEVE A GOOD FIT, AND TO REMOVE POSSIBLE LEAKS



PRESS THE METAL CLIP SMOOTHLY ACROSS THE BRIDGE OF THE NOSE TO ACHIEVE A GOOD FIT, AND TO REMOVE POSSIBLE LEAKS



**PRESS DOWN THE EXTREMITIES OF THE NOSE PIECE
AGAINST THE CHEEKS**



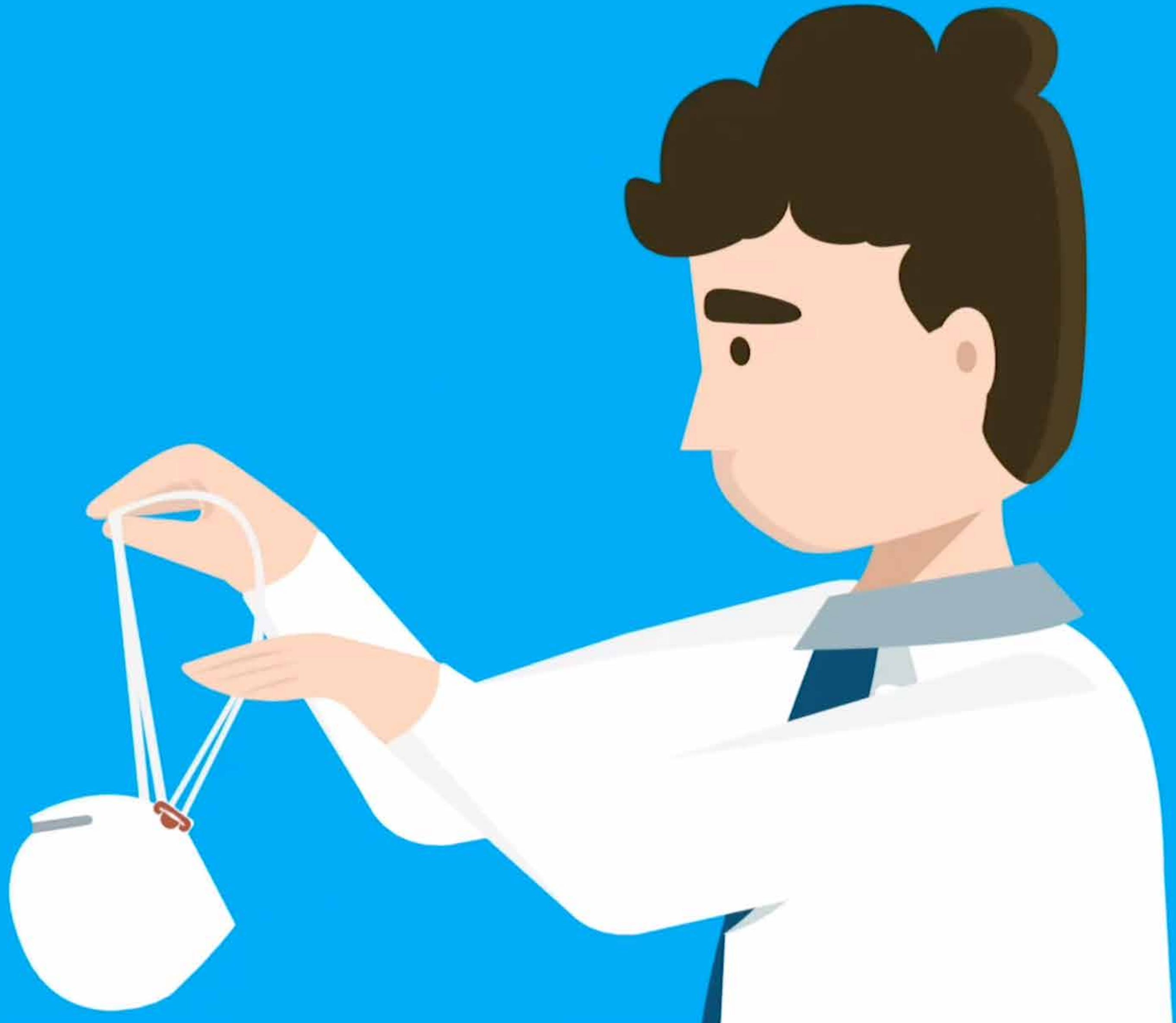
CHECK ALL
THE OUTER
EDGES OF
THE MASK AND
CONFIRM THAT
NO AIR ESCAPES
AROUND
THE EDGES.



FILL YOUR MOUTH
WITH **AIR**, AND
BREATHE OUT
– THE AIR SHOULD
NOT ESCAPE
ANYWHERE AROUND
THE MASK



TO **DOFF**
THE MASK,
ONLY **USE** THE
STRAPS AND
DON'T TOUCH
THE **BODY** OF
THE MASK



FOLLOW HOSPITAL
INSTRUCTIONS
TO DISPOSE OF
YOUR **MASK**



