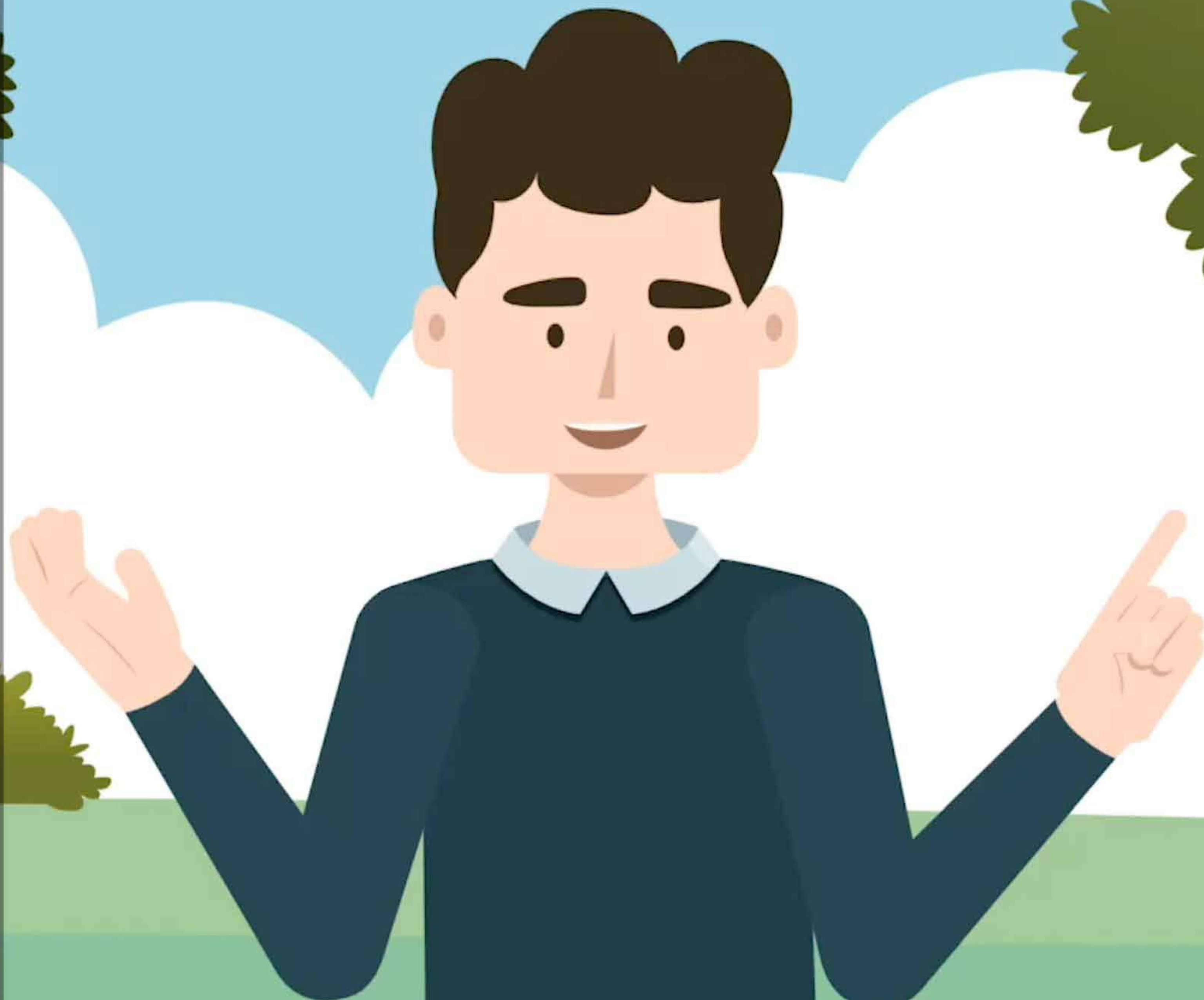


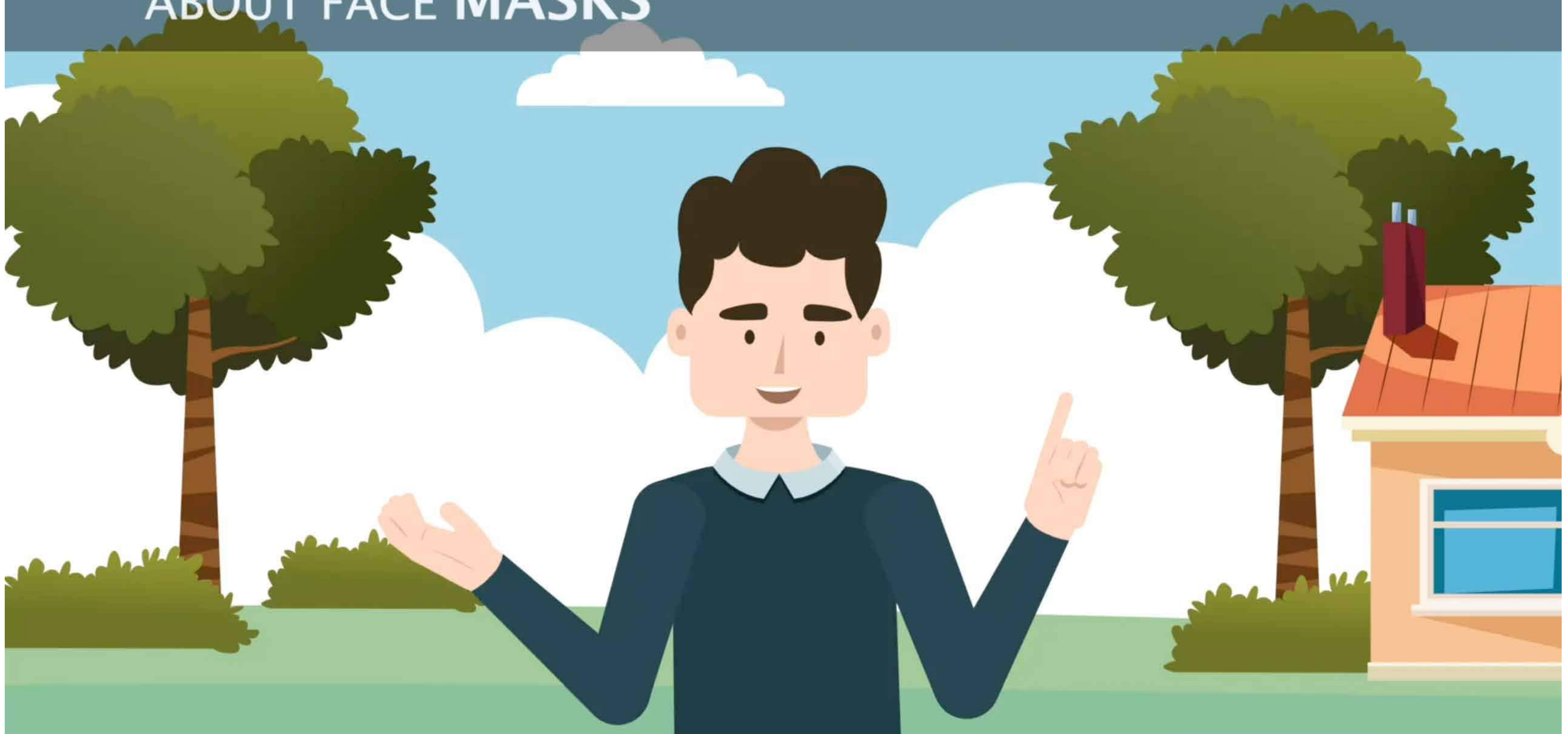


PRESENTS

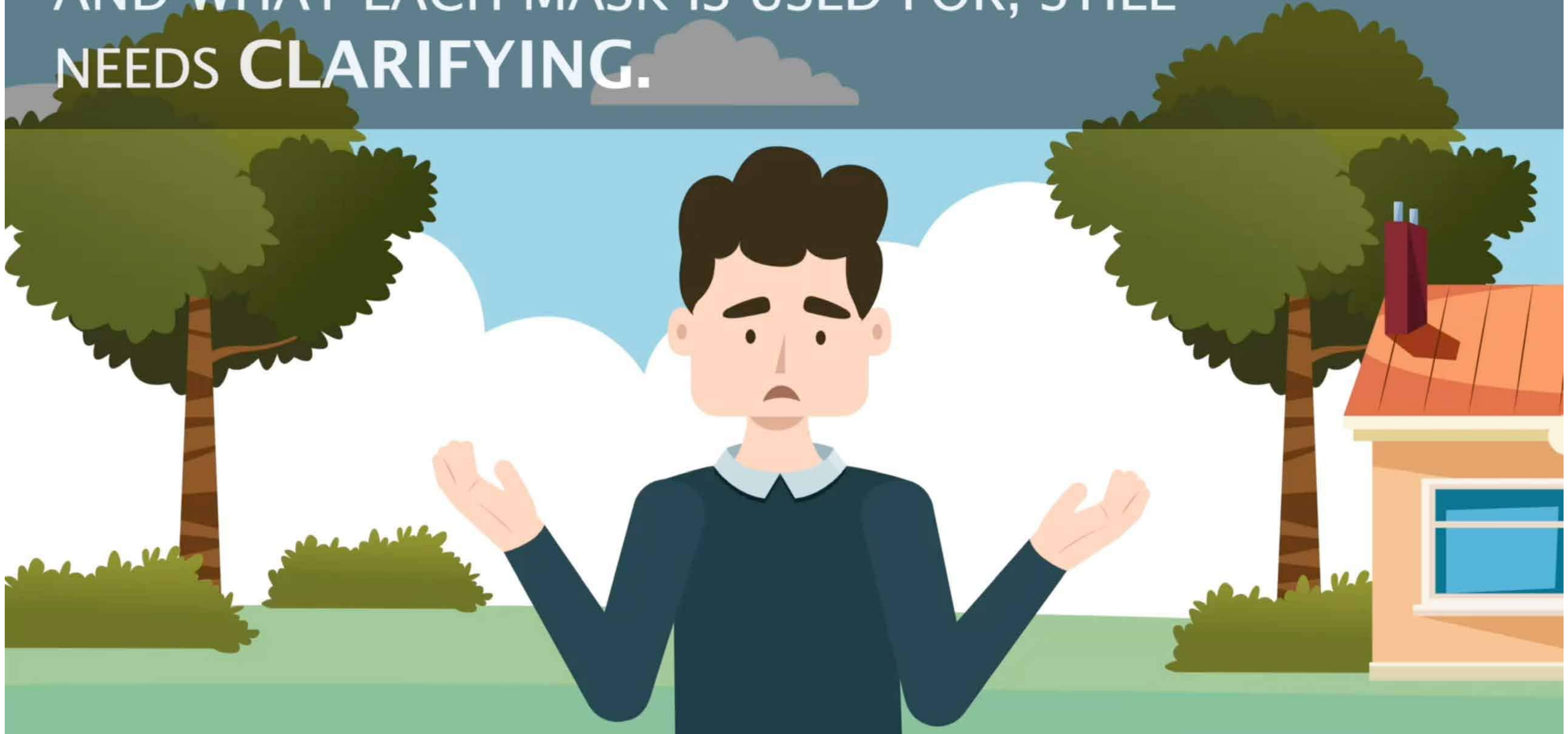
GUIDANCE ON RECOGNISING THE AUTHENTICITY OF CE CERTIFIED RESPIRATORS AND THEIR USES



IN RECENT WEEKS, THERE HAS BEEN A LOT OF TALK
ABOUT FACE MASKS

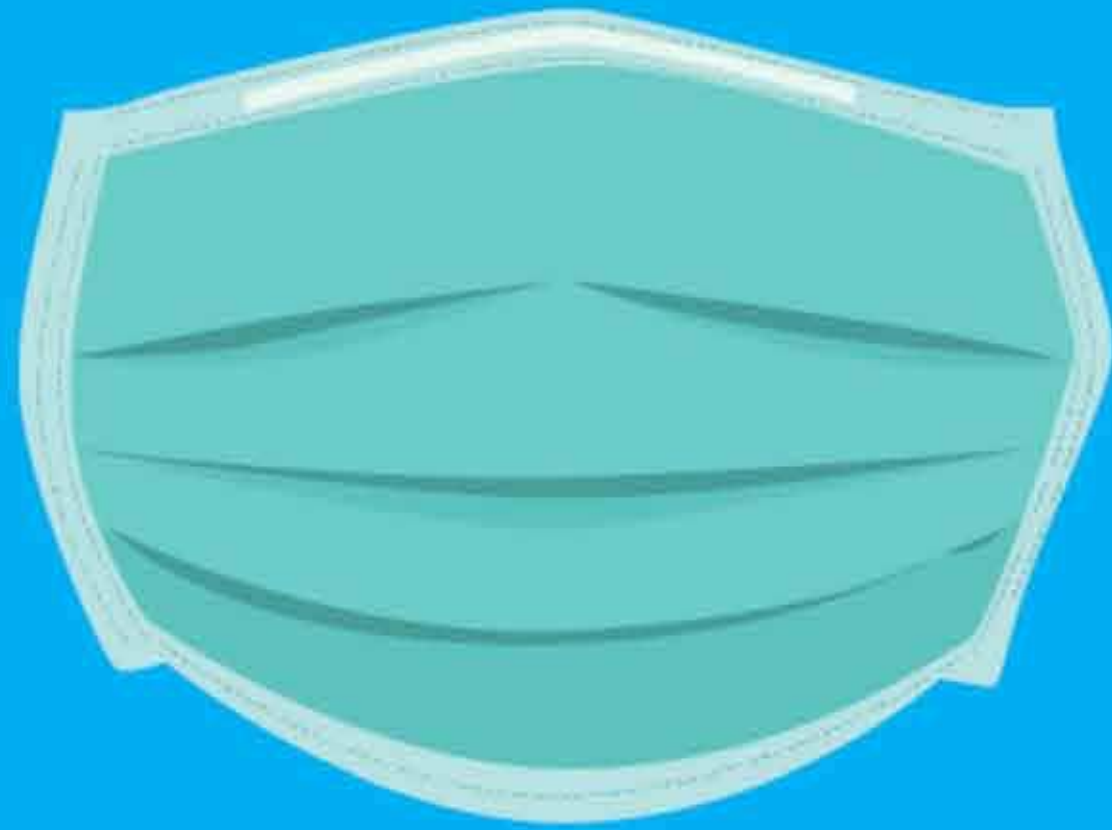


HOWEVER, HOW TO RECOGNISE A **CERTIFIED MASK**,
AND WHAT EACH MASK IS USED FOR, STILL
NEEDS **CLARIFYING**.



LET'S TRY TO CLARIFY...

FIRST OFF, THERE ARE **THREE** MAIN FAMILIES OF MASKS



SURGICAL MASKS



PROTECTIVE FACE MASKS



RESPIRATORS WITH REPLACEABLE FILTERS

SURGICAL MASKS

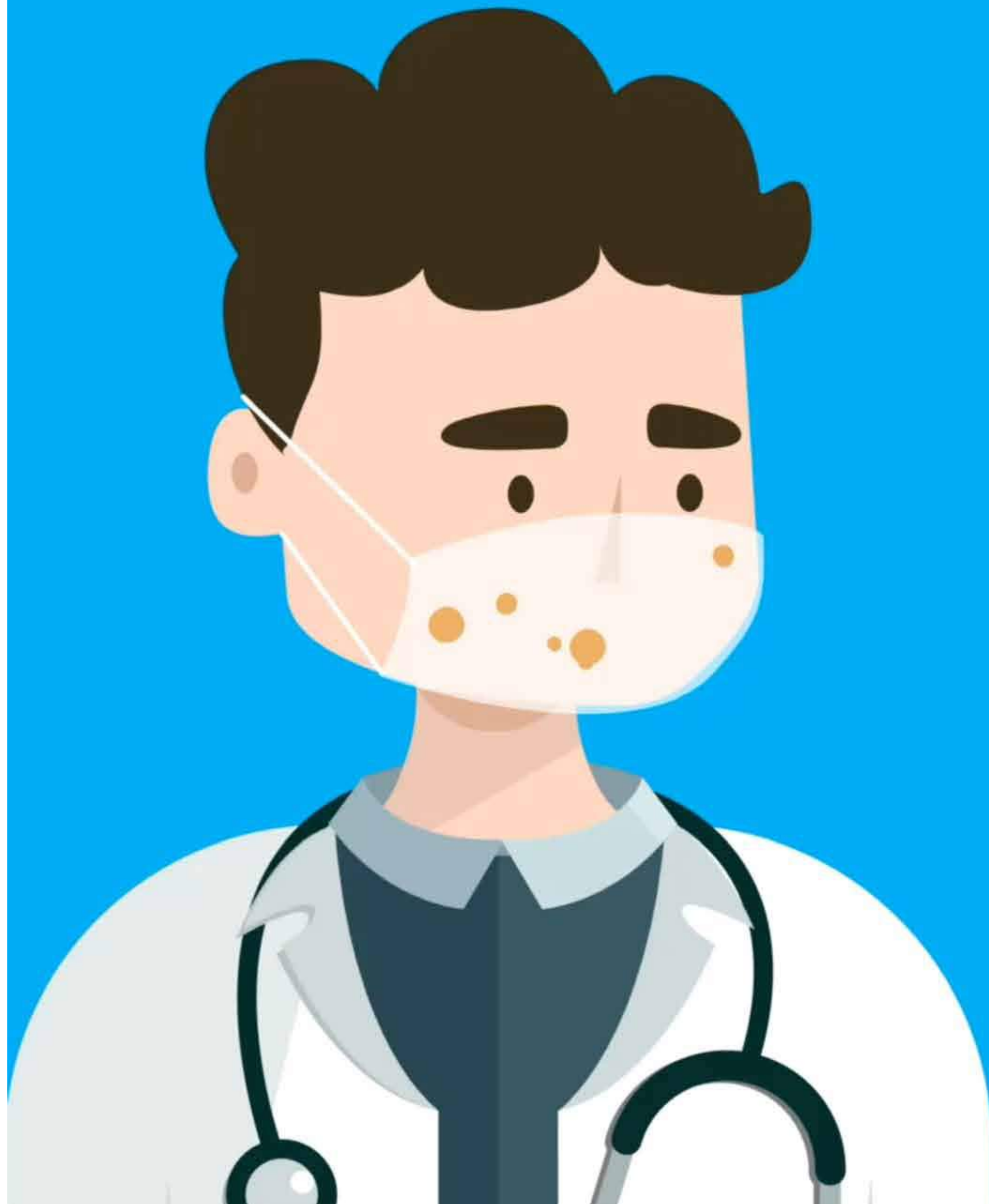


A **SURGICAL MASK** DOES **NOT** USUALLY HAVE
PRODUCT INFORMATION OR **NUMBERS** PRINTED ON IT



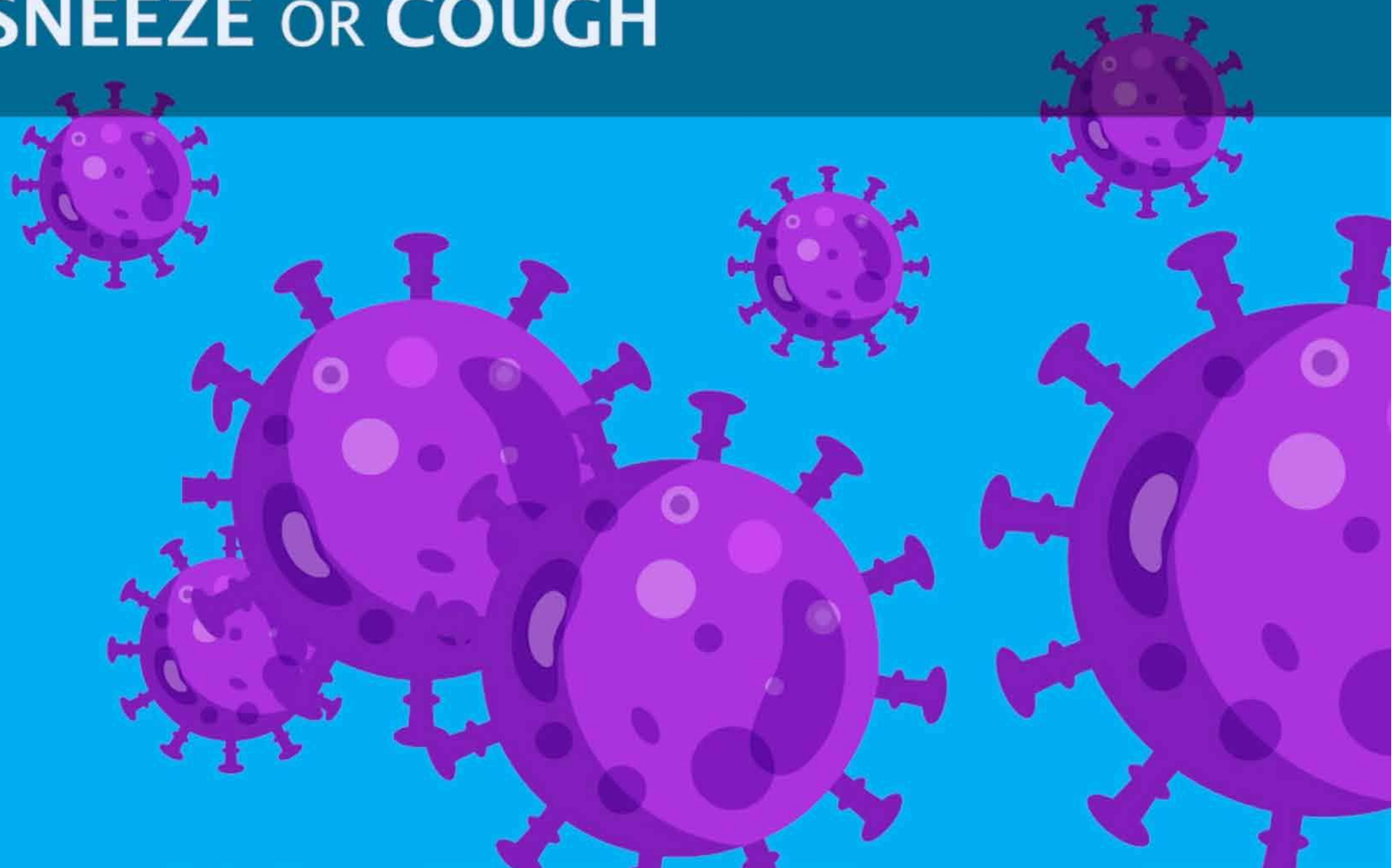
YOU CAN FIND THIS INFORMATION ON THE PACKAGING OF THE MASK. WHEN A SURGICAL MASK HAS BEEN TESTED BY THE MANUFACTURER, THE STANDARD WILL BE INDICATED ON THE PACKAGING.





THIS SORT OF MASK
DOESN'T PROTECT
THE **WEARER**, BUT LIMITS
THE **SPREAD** OF A **VIRUS**
BY **PREVENTING** THE
EXPULSION OF
DROPLETS, AND ANY
OTHER NASAL OR ORAL
SECRETION, TOWARDS
OTHER PEOPLE

LET'S KEEP IN MIND THAT **CORONAVIRUSES** MEASURE **100–150 nm** IN DIAMETER, AND **TRANSMIT VIA DROPLETS** SPREAD DURING SPEECH AND MOST OF ALL WHEN WE **SNEEZE** OR **COUGH**





A SURGICAL
MASK IS A
SINGLE USE
PRODUCT

PROTECTIVE FACE MASKS



THESE MASKS MUST
BE TESTED AND
CERTIFIED BY AN
ACCREDITED
INDEPENDENT BODY,
NOT AFFILIATED
WITH THE
MANUFACTURER.



LET'S FIND OUT
SOME **DETAILS** THAT
HELP US **RECOGNISE**
IF A FACE MASK IS
CERTIFIED.





IT'S A LEGAL
REQUIREMENT
TO HAVE THE
MANUFACTURER
LOGO ON THE MASK



THE “CE” SYMBOL
INDICATES THE MASK
IS COMPLIANT WITH
EUROPEAN STANDARDS



FOR PROTECTIVE
FACE MASKS, TO
CONFORM WITH
THE STANDARD,
IT MUST BE
FOLLOWED BY
A NUMBER



THIS NUMBER,
FOR EXAMPLE “0426”,
IDENTIFIES THE BODY
RESPONSIBLE FOR
ASSESSING THE
MANUFACTURING
OF THE MASK.



ON THE **EUROPEAN COMMISSION WEBSITE**, USING THE NUMBER PRINTED NEXT TO THE “**CE**” MARKING, IT IS POSSIBLE TO VERIFY IF THE BODY EXISTS AND TO FIND ITS **CONTACTS**.

The screenshot shows the European Commission website interface. At the top, there is a header with the European Commission logo, the language set to English (EN), and a search bar. Below the header, a breadcrumb trail reads: European Commission > Internal Market, Industry, Entrepreneurship and SMEs > Single Market and Standards > Tools and Databases > Notified bodies Nando > Body. The main content area has a sidebar on the left with a home icon and tabs for 'Single Market and Standards' (selected), 'Industry', 'Entrepreneurship and SMEs', 'Access to finance for SMEs', and 'Sectors'. The sidebar also contains filters for 'Notified bodies Nando', 'Country', 'Legislation', and 'Body'. The main content area is titled 'Bodies' and features an alphabetical index from A to Z. Below the index, there are two columns of links: 'Technical Assessment Body' and 'User inspectorate PED Art. 16' on the left, and 'Recognised third-party organisation PED Art. 20' and 'Withdrawn/Expired/Suspended Notifications/NBs' on the right.

European Commission | English EN | Search

European Commission > Internal Market, Industry, Entrepreneurship and SMEs > Single Market and Standards > Tools and Databases > Notified bodies Nando > Body

Internal Market, Industry, Entrepreneurship and SMEs

Single Market and Standards | Industry | Entrepreneurship and SMEs | Access to finance for SMEs | Sectors

Notified bodies Nando

Country

Legislation

Body

Bodies

A B C D E F G H I J K L M N O P Q R S T U V W X Y Z

[Technical Assessment Body](#)

[User inspectorate PED Art. 16](#)

[Recognised third-party organisation PED Art. 20](#)

[Withdrawn/Expired/Suspended Notifications/NBs](#)

Notified body

www.ec.europa.eu/info



THE MODEL NUMBER
IS ALSO A
LEGAL REQUIREMENT,
FOR EXAMPLE
“SEGRE F30000”



IT IS ALSO A
LEGAL REQUIREMENT
TO SHOW THE
STANDARD THE MASK
IS REGULATED BY
– IN THIS CASE
“EN 149:2001+A1:2009”



FINALLY, IT'S A
LEGAL REQUIREMENT
TO SHOW THE CLASS
OF THE MASK, IN
THIS CASE “FFP3”.



ON SOME
MASKS YOU WILL
ALSO SEE THE
PRODUCTION
BATCH NUMBER.



THIS ISN'T MANDATORY,
BUT **SHOWS** THAT
THE MANUFACTURER
IS ENSURING TRACEABILITY
ACROSS ALL ITS
PRODUCTION PROCESSES



IN FACT IT GIVES
ACCESS TO IMPORTANT
INFORMATION,
SUCH AS THE
ORIGINS OF THE
RAW MATERIALS
USED TO MAKE
THE **MASK**



IF A MASK **DOESN'T** HAVE THIS INFORMATION CLEARLY MARKED ON IT, THEN IT IS **NOT** CERTIFIED



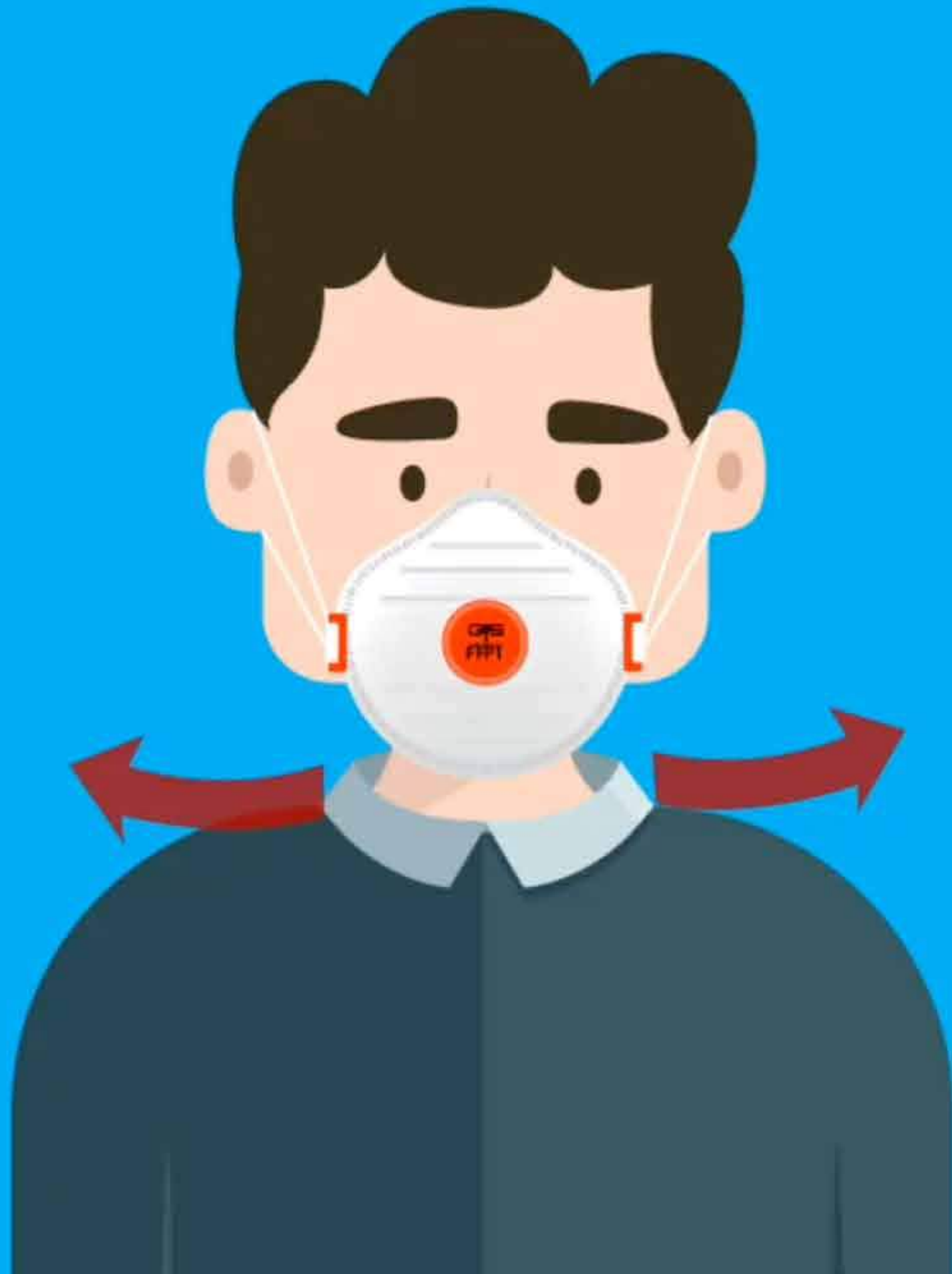
LET'S LOOK NOW AT THE USES OF FFP1, FFP2 AND FFP3 MASKS, THE MOST SUITABLE DEVICES TO PROTECT US AT THIS TIME



THESE MASKS COME **WITH** OR **WITHOUT** A VALVE



VALVED MASKS ONLY PROTECT THE WEARER AND NOT OTHER PEOPLE, AS THE VALVE ALLOWS THE WEARER'S EXHALED BREATH OUT OF THE MASK



MASKS WITHOUT VALVES
PROTECT BOTH
WEARER, AND THOSE
AROUND THEM.



FILTERING CAPABILITY OF EACH OF THESE MASKS, IN BOTH DIRECTIONS:



FFP1

80%



FFP2

94%



FFP3

99%



AN **UNVALVED**
FFP3 MASK OFFERS
THE **BEST**
LEVEL OF PROTECTION
AND **CONTAINMENT**
AGAINST **INFECTIOUS**
AGENTS

REUSABLE MASKS WITH REPLACEABLE FILTERS



THE FILTERING CAPACITY
OF A REUSABLE MASK
WITH **REPLACEABLE**
FILTERS is 99,95%.



99,95%

**BOTH REUSABLE AND DISPOSABLE MASKS
CAN BE **DISINFECTED** AND **RE-USED**, FOLLOWING
MANUFACTURER INSTRUCTIONS**



FINALLY, REMEMBER THAT IT IS ALWAYS **NECESSARY** TO FOLLOW THE TWO **MOST IMPORTANT RULES** – **MAINTAIN SOCIAL DISTANCING** AND **WASH YOUR HANDS**.



#covidtips
#stayhome

